



## Advanced Training Systems

atstargets.com

651-429-8091

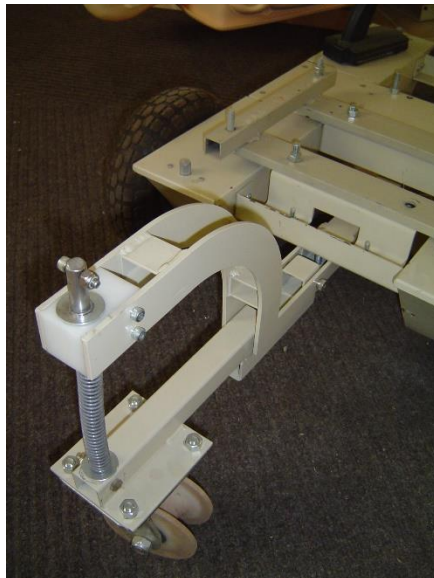
info@atstargets.com

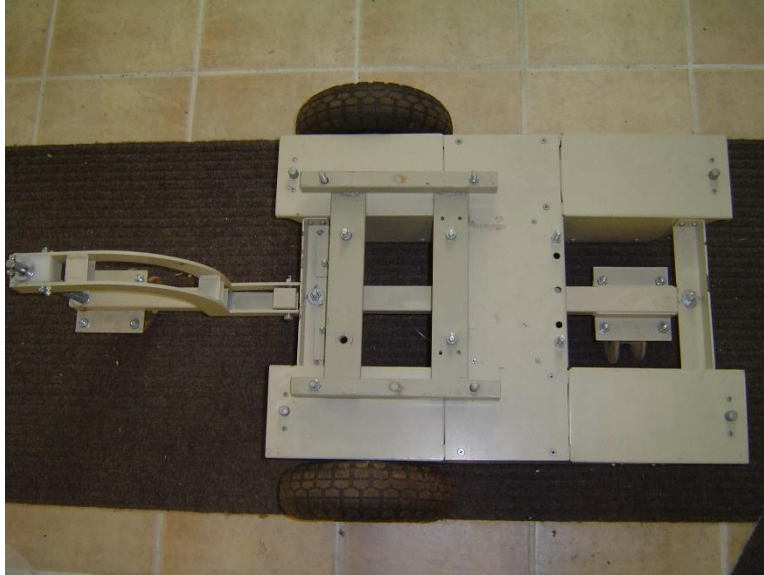
1309 Oak Ave STE 205

Waconia, MN 55387

## MT-72 Dual Direction Guide System

The purpose of the MT dual direction guide system is to allow the MT-72 to travel down a 1" PVC pipe track.



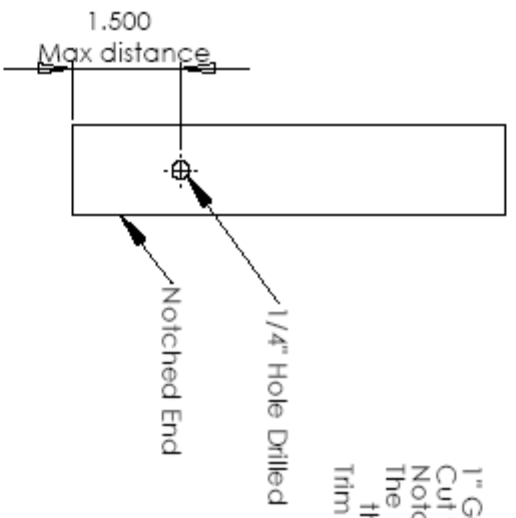
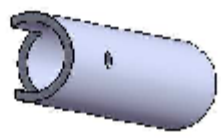
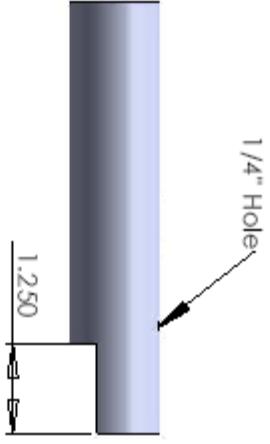
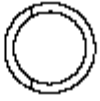


### Installation:

1. Remove the Caster Wheel on the end opposite the drive wheels
2. Slide the dual direction system under the MT
3. Using the supplied hardware attach the system as shown. The hole near the drive wheels is threaded so no nut is needed, the end near the batteries requires a bolt and nut.
4. Ensure the tracking system is parallel with length of the unit. The holes have enough slop to allow the tracker system to be moved back and forth to ensure alignment.
5. Place the System on a 1" PVC electrical conduit

### Notes for Operation

1. The track should be made from 1" Gray Electrical PVC Conduit
2. You must cut the flared end from the PCV and use the track connectors
3. Cut the ends of the PVC as shown below and drill as shown
4. Most electrical contractors have plastic tube benders to create corners for your track
5. The radius of the track on any corner can not be less than 48"
6. The tension of the swing arm on the guide system can be adjusted. If more tension is required you can slide the washer up and use a cotter pin in the pre-drilled holes to add tension. If the spring is too stiff the spring can be shortened. Each installation is different so some amount of trial and error will be required to fine tune the operation.
7. The system is not water proof



1" Gray Electrical PVC Conduit in 10" Lengths  
Cut the Flare off one End  
Notch each end and drill the 1/4" hole for the track connector  
The purpose of the notch is to allow the ends to butt together in  
the center of the track donconnector  
Trim as needed to make a tight butt joint



